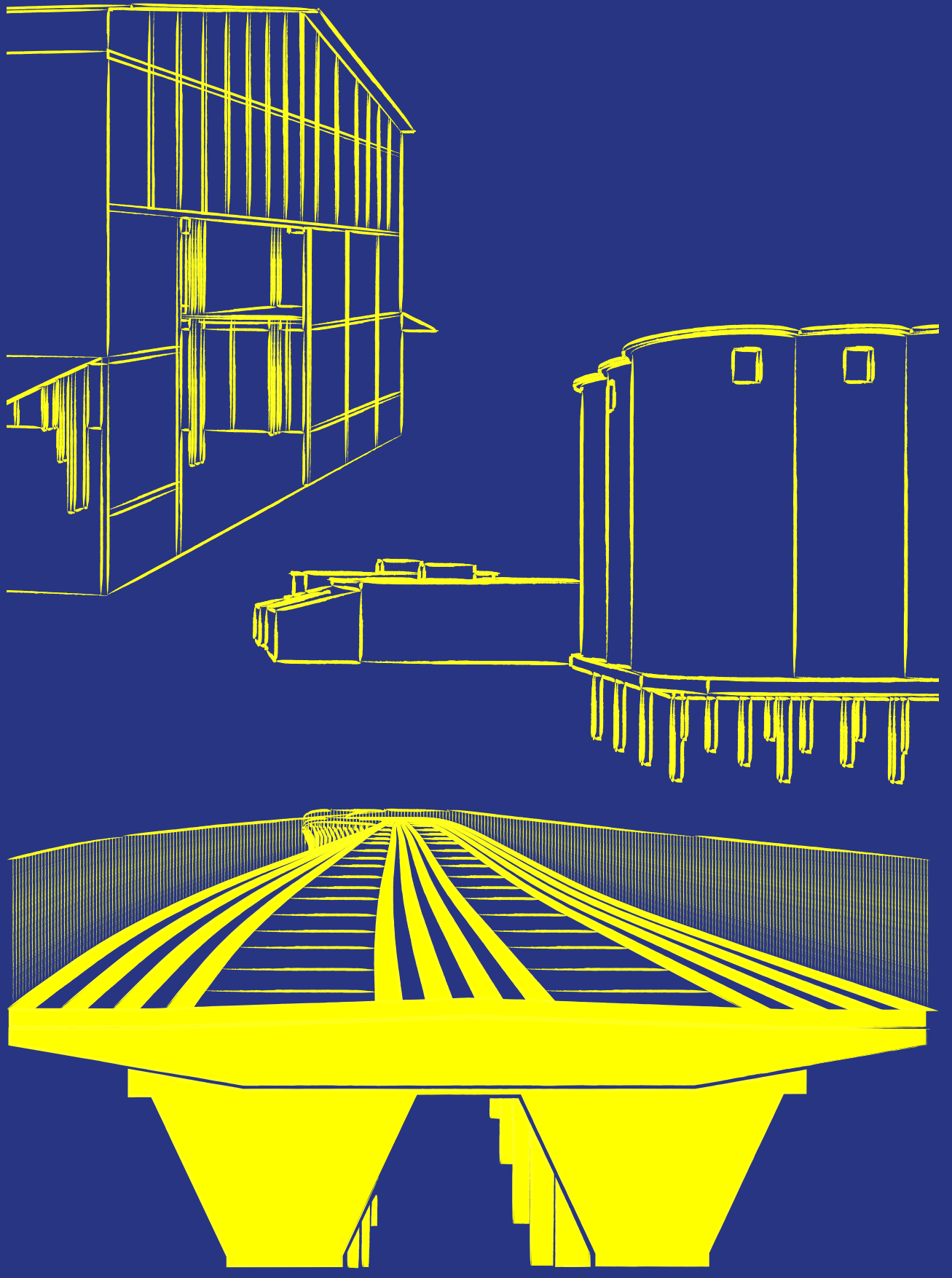


# Re Discovering / Imagining Staten Island

Designing Public Scholarship



The Northshore Railway

YUMP | Stapleton Library



# PROJECT INITIATION

The idea for this exhibition started with an Urban Design Studio prompt, which developed into a strong desire to reimagine the urban possibilities of historic industrial disused sites on Staten Island. The site was one-of-a-kind, with a defunct railway running through plots of abandoned land in various scale.

With the aspiration that public space design and programming should be engaging with the city and people, we did not want to adopt a “design and drop in” approach, hence the use of an interactive exhibition to open up the conversation with local residents and ultimately, to reimagine their future environment with them.

The project began with weeks of arduous site research as we curated historical materials, collected spatialized data, and analysed the site conditions. Thereafter, we had to devise the methods to visualise and present the research findings, which ultimately came in the form of informative drawings, postcards, maps, collages, booklets, and games. It was envisioned that by distilling content-heavy architectural research into simple, digestible, and tangible materials that the audience could interact with, the exhibition performs as a platform for knowledge sharing and cross-discipline communicative process, which reduces barrier of entry for individuals and organizations who want to interfere, plan, and build with these spaces.







NOT



EXIT



# EXHIBITION INSTALLATION

Although the exhibition was only meant as a mere project review in YSOA, our group felt the urge to bring it to life and take it out of the classroom to the local residents and organisations on Staten Island – the people who would resonate most with the materials.

The exhibition was hosted in the Stapleton Branch of the New York Public Library, which serves as a centre of community life for the diverse neighbourhood. At the heart of the library, we set up five stations at the heart of the library each exploring different research topics of Staten Island: “Industrial historic heritage and local memories”, “Contemporary social and environmental inequalities”, “Disused site and railway analysis”, and “Reimagining of disused structures as cultural spaces”. Each station has interactive elements for visitors to comment, to inquire, to propose, to imagine and to express.

**Stapleton Library, Staten Island, NY**



*exhibition stations set up*





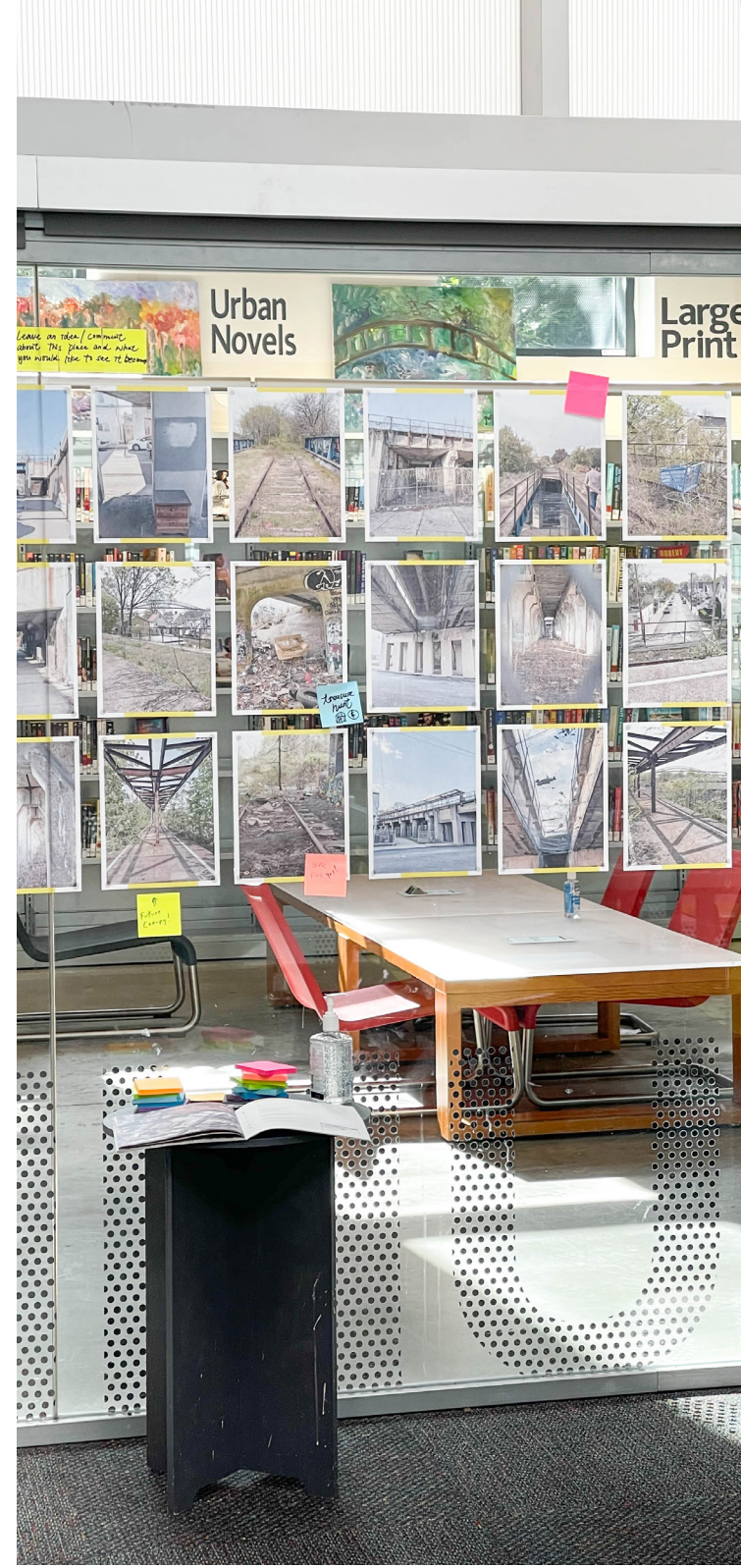




STATION I



STATION II



STATION III



STATION IV

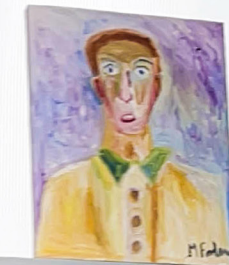




News

Music &  
Audiobooks

Reference



REIMAGINED  
CORRIDOR

STATION FOUR

STATION THREE

STATION ONE

Newspaper

Paperback Fiction

Classics

Urban Novels

Large Print

Manga



# PUBLIC ENGAGEMENT

To have local individuals and organizations to engage in the exhibition and discuss about the topics presented are of utmost importance. By encouraging visitors to draw and write on the exhibits, we gathered thoughts and ideas from the local perspectives of different generation and communities. We also held workshops where we elaborated the idea behind the exhibition and furthered the discussion with the visitors. Although this exhibition is temporary event, we see it as an ongoing test and model for preliminary engagement and connection with the local community, establish common ground and interest between designers and locals, and generating informative conversation loop that would further inform future design objectives and collaborative process.

**Stapleton Library, Staten Island, NY**







IN CASE YOU WOULD LIKE TO WRITE TO US / ANY STATEN ISLAND OFFICIALS, PUT MAILBOX AND WE FOR YOU ~

ADDRESSES THE BACK

IN THE

COMMENTS / HUBZ/TOWN, OWN ON

POSTCARDS ARE FOR YOU TO WRITE / DRAW ON, OR TAKE ONE A COMMENT!

Dear Vito  
I hope  
I'll visit  
Grand Lill Vert  
Town on this  
train tracks, so  
Staten Island  
can be appealing  
an be appealing

Vito Fossella  
Borough Hall  
Staten Island  
10301

Dear Mr. Vito Fossella  
My name is Stephanie  
Lafite, and I am writing  
to ask that you please  
consider back the  
railway train system.  
It is vital to our  
infrastructure, my child  
Lick history and  
Road Economy.

Vito Fossella  
Borough President  
Borough Hall  
Staten Island, NY  
10301

Vito Fossella  
Borough Hall  
Staten Island  
NY. 10301

I would love to see  
this school so it can be  
reused to get around the  
state

Vito Fossella  
Borough Hall  
Staten Island, NY  
10301

I propose  
electing Ranti  
Ogunleye as our  
Council man  
to build the light  
rail and restore the  
Northshore as he stated  
in his campaign

Vito Fossella  
Borough Hall  
Staten Island, NY  
10301

Dear Staten Island  
Re-Discover/Improve  
Staten Island

There are so many  
vacant/abandoned buildings  
on LI that not only  
embed historic memory of  
the place, but also present  
huge opportunity of redefining  
as cultural/social space  
for Staten Islandians. Please  
engage with public artists,  
redefining/reimagining these  
spaces.

VITO FOSSELLA  
BOROUGH  
PRESIDENT  
Borough Hall  
Staten Island  
NY 10301

When the prospect of the  
Vheel was announced, some  
of us celebrated, but it has  
raised the exciting engine matter  
to become a reality, just how  
hard we we invest in this space  
in a way that makes it attractive  
to residents? Perhaps more events?

Vito Fossella  
1211 Richmond Ave  
Staten Island, NY 10301

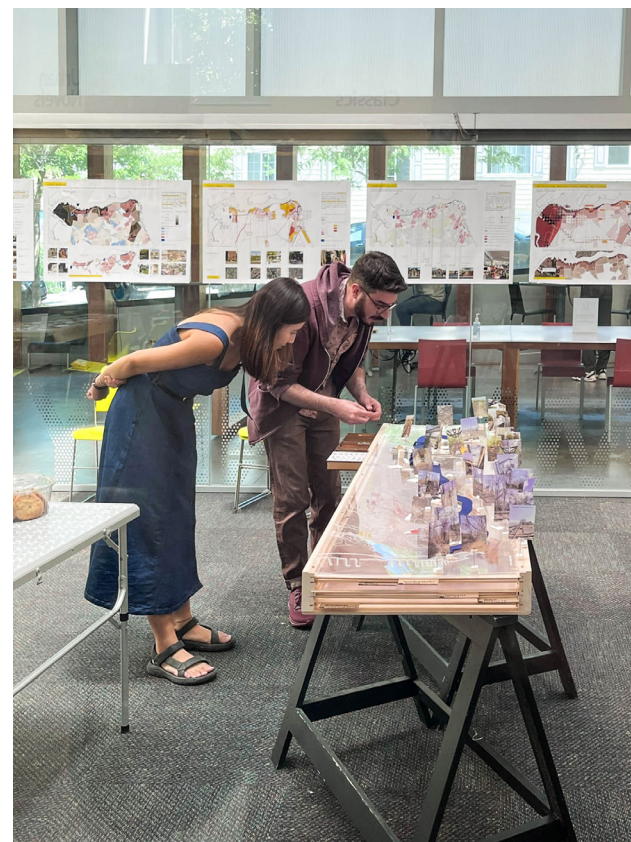
Dear Borough President,  
Please make planning  
for the Staten Island  
RR North Shore Branch  
A PRIORITY. So much  
potential. Sincerely,  
Elihu Rubin

Mr. Vito Fossella  
Borough President  
Staten Island, NY  
10301

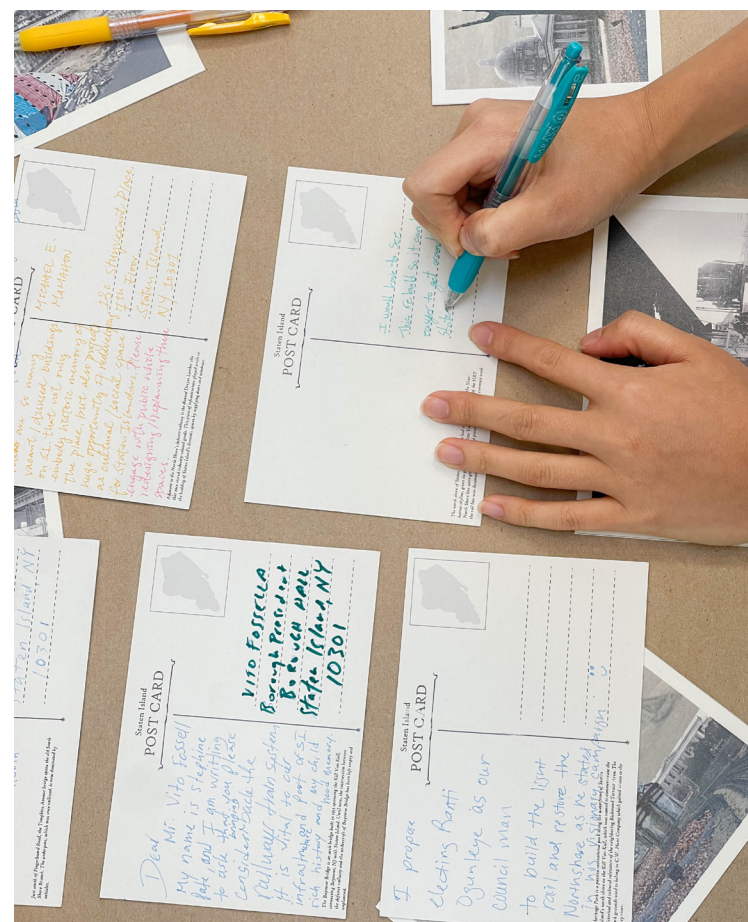
I would like  
the transit system  
to be improved on.  
Buses be more  
available and a  
more expanded train  
system.

Vito Fossella  
Borough Hall  
Staten Island, NY  
10301

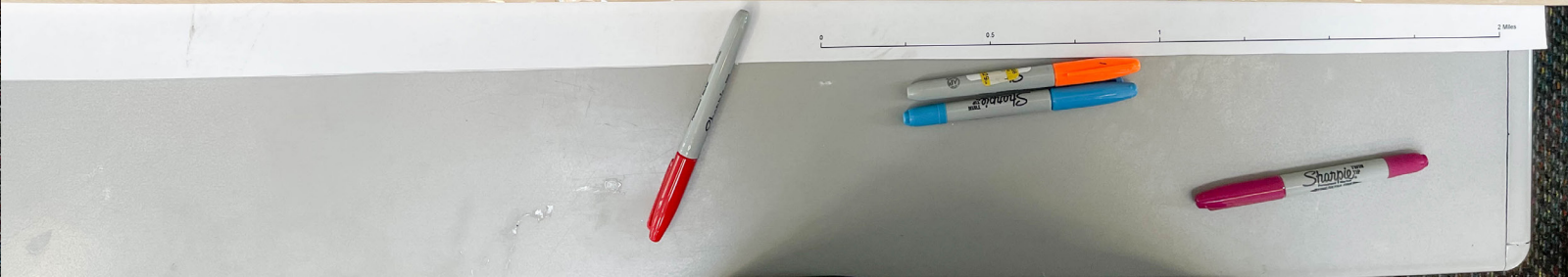
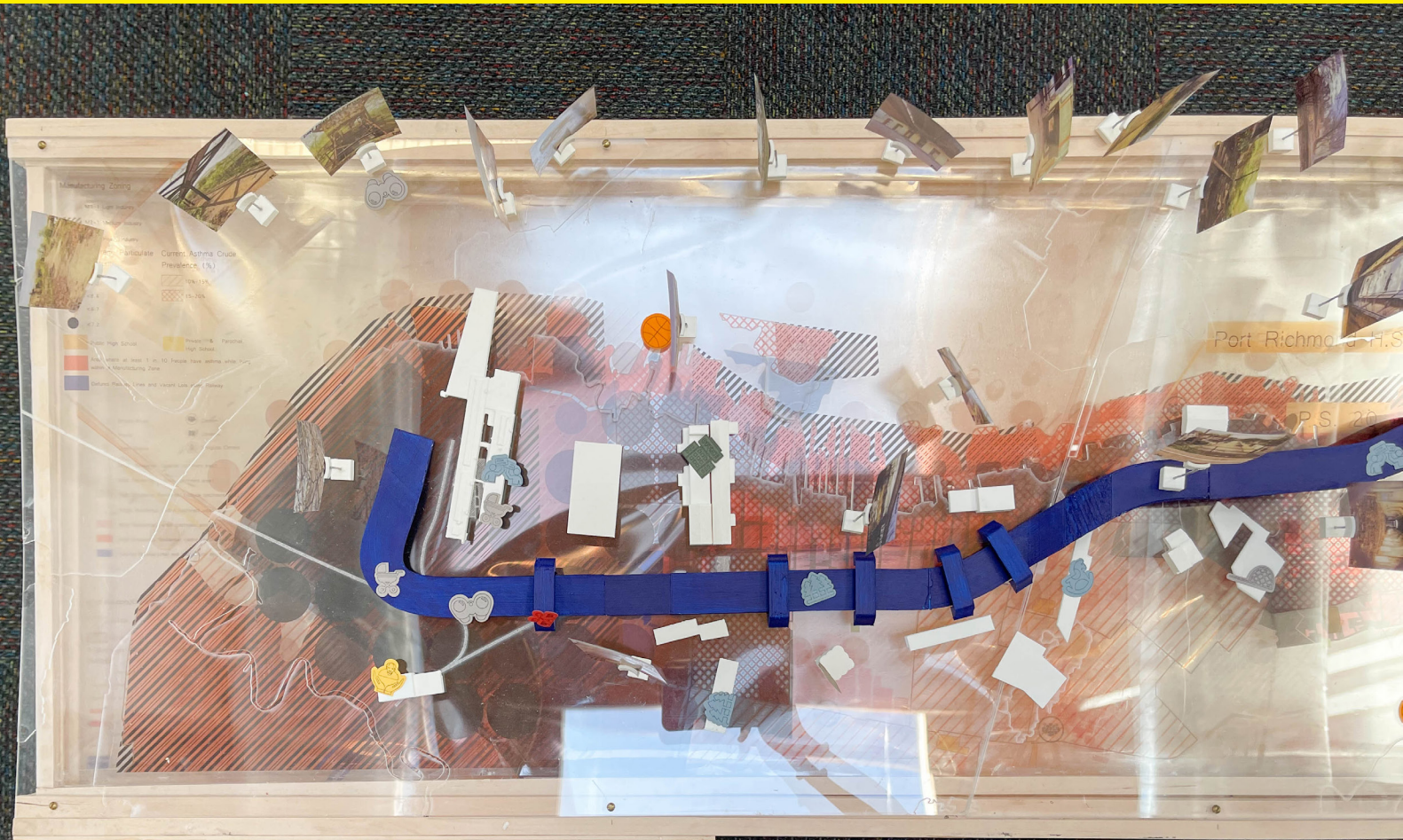














**Exhibition Curator: Chu Lok Yiu Janice**

**Content Designer: Ariel Bintang,  
Chu Lok Yiu Janice, Jerry Chow**

**Advising Professor:  
Elihu Rubin**

**Special thanks to:  
YUMP & Stapleton Library**