

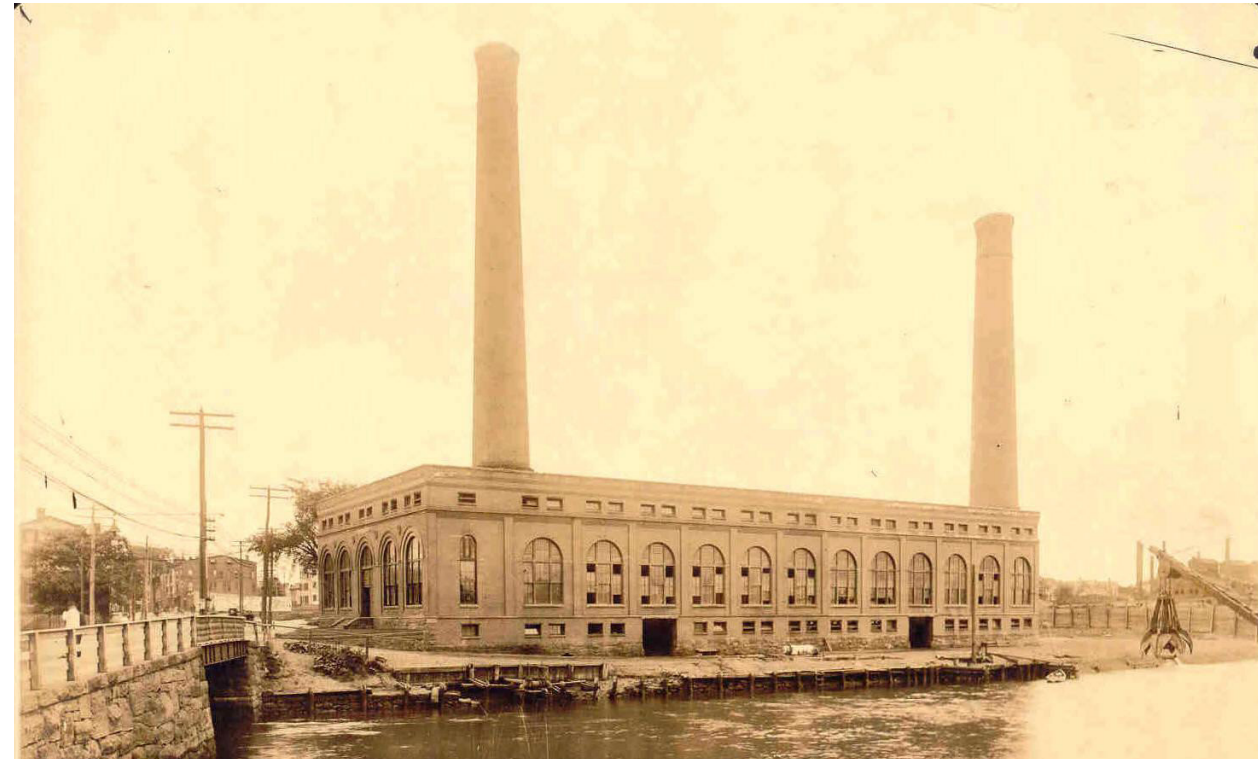
# Off The Rails:

*Exploring the Legacy of the Streetcar in New Haven*

*Orli Hakanoglu*



*458 Grand Avenue*



Powerhouse Building, 1903

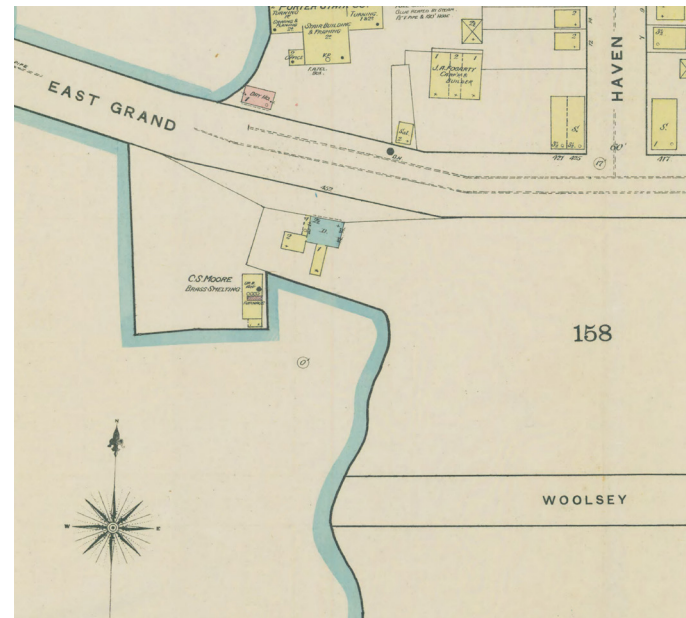


Powerhouse Building, 2019

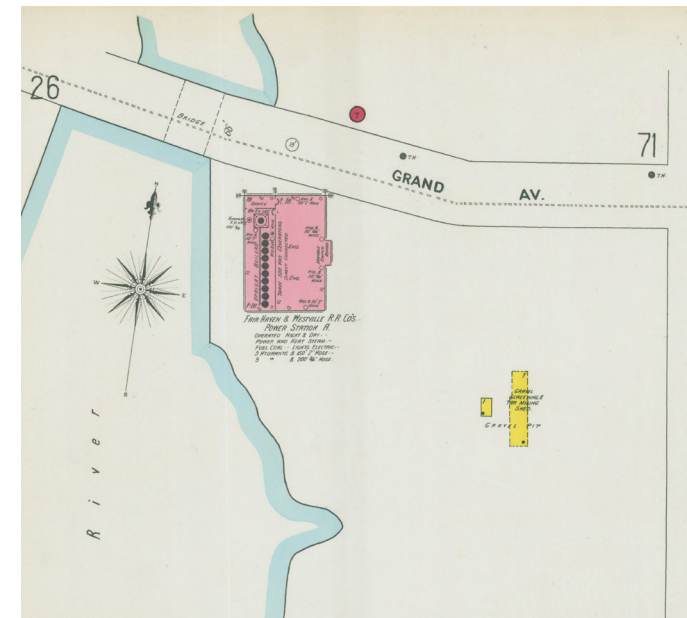
*458 Grand Avenue*



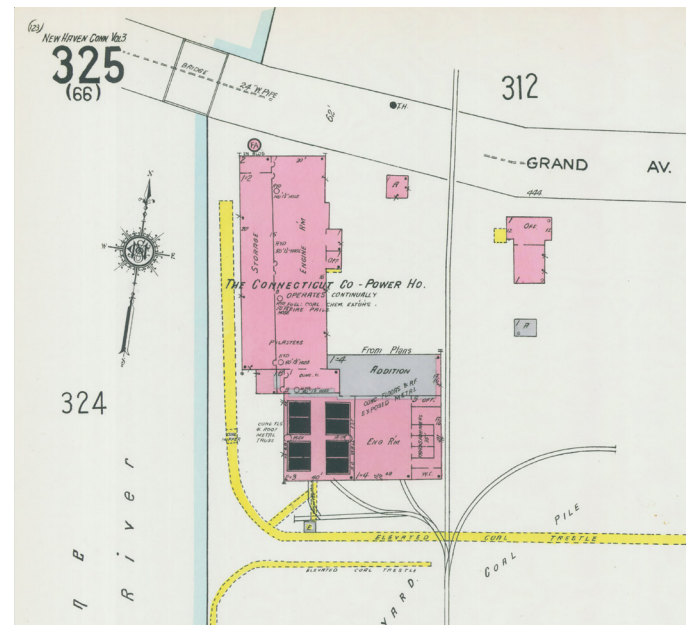
# Sanborn Maps



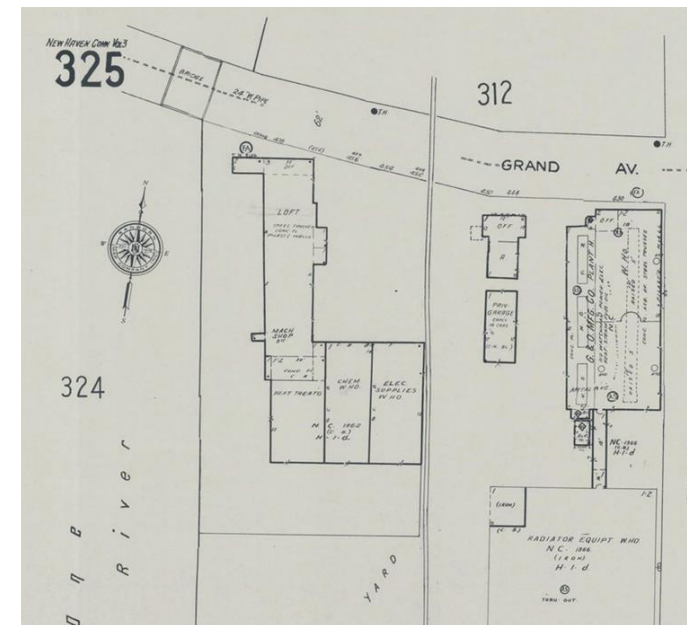
1886: Not yet built



1901: Fair Haven and Westville RR Co's Station A  
Description: Operated Night and Day. 10 Upright Boilers. Fuel: Coal. Lights: Electric. Power and Heat: Steam



1924: The Connecticut Co - Power House  
Operates Continually. Engine Room Addition, Connected to Elevated Coal Trestle

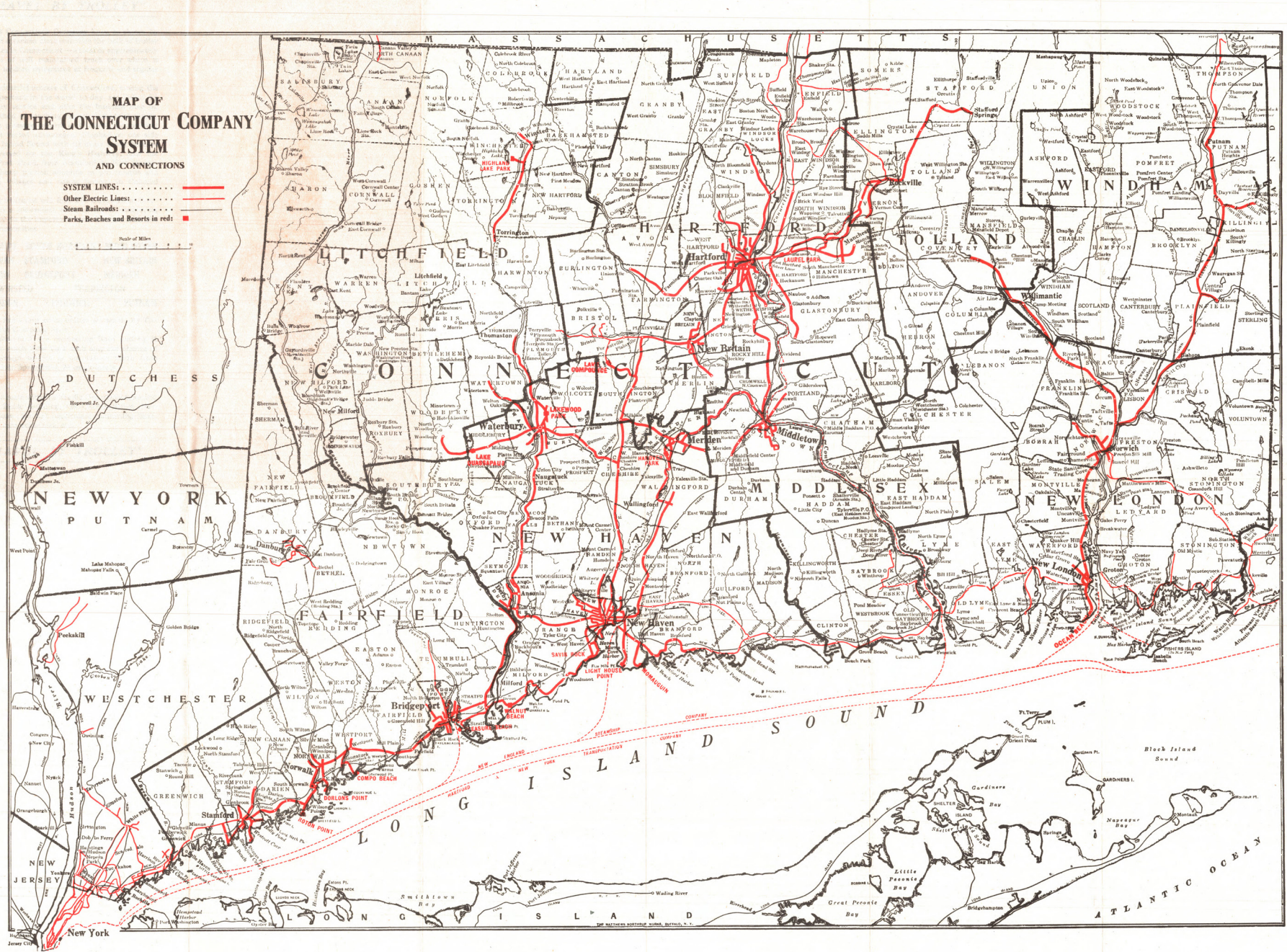


1973: No longer operated by Connecticut Co. Back Rooms subdivided into Heat Treating, Chemicals, and Electric Supplies

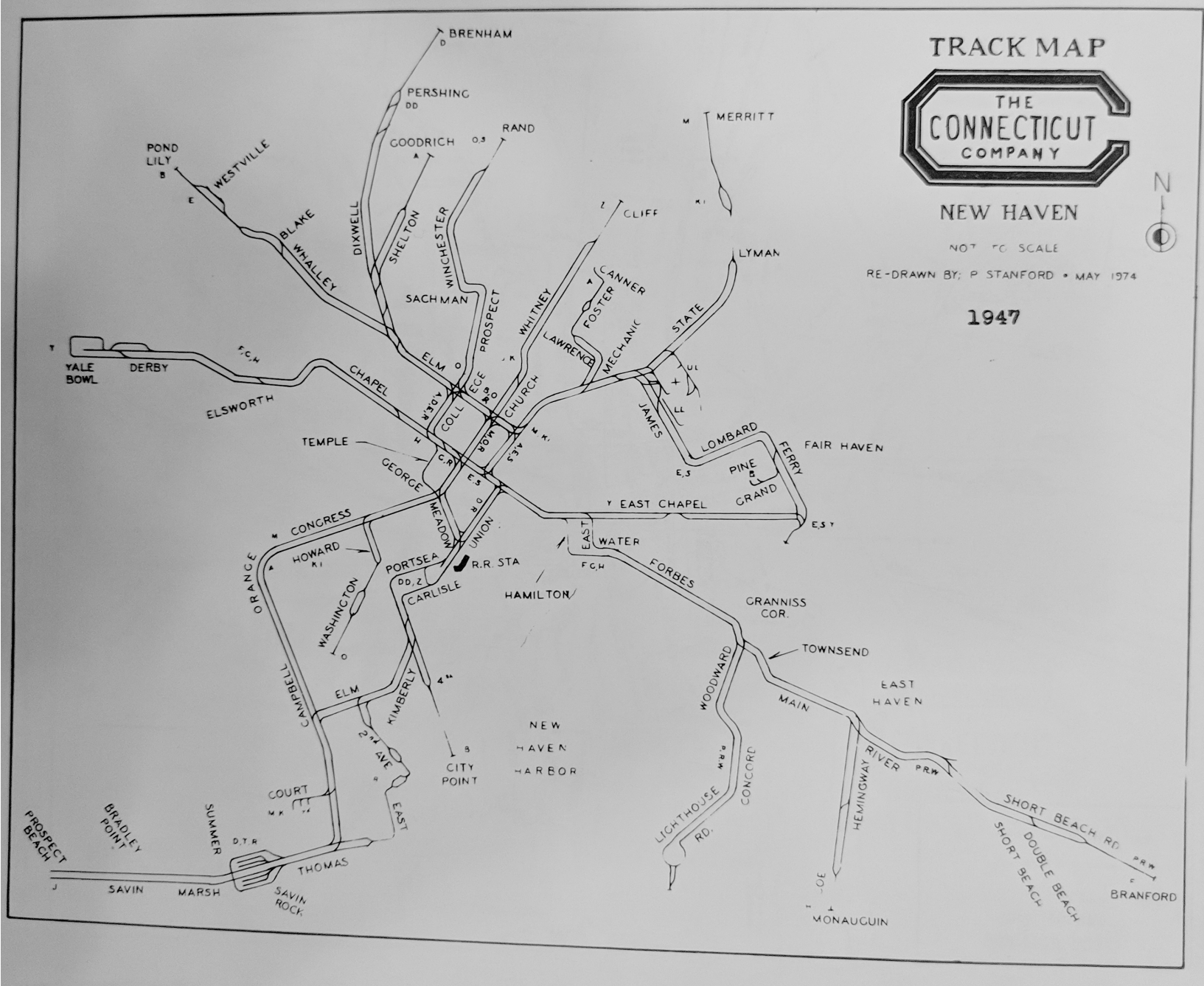
*The Streetcar*



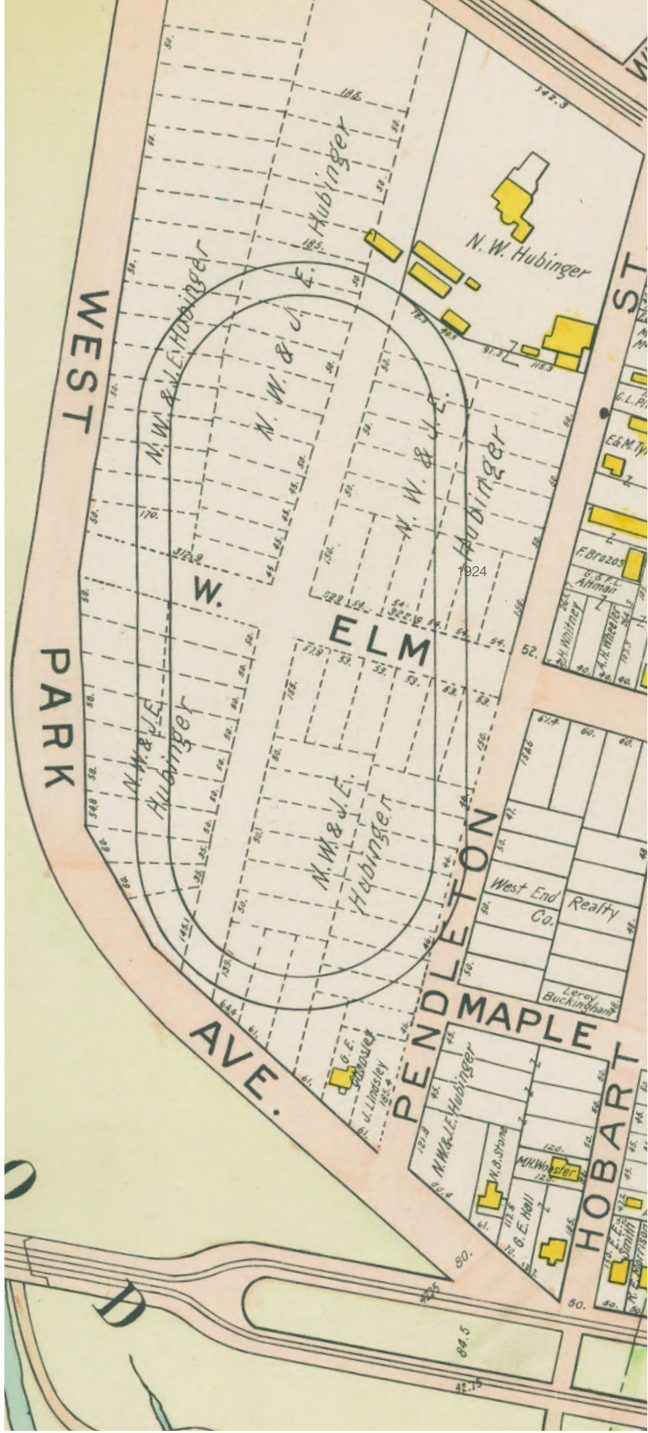
Connecticut Company Track Map :  
State-wide



Connecticut Company Track Map :  
New Haven



# Streetcar Suburbs Hubinger Street Case Study



1911



1924



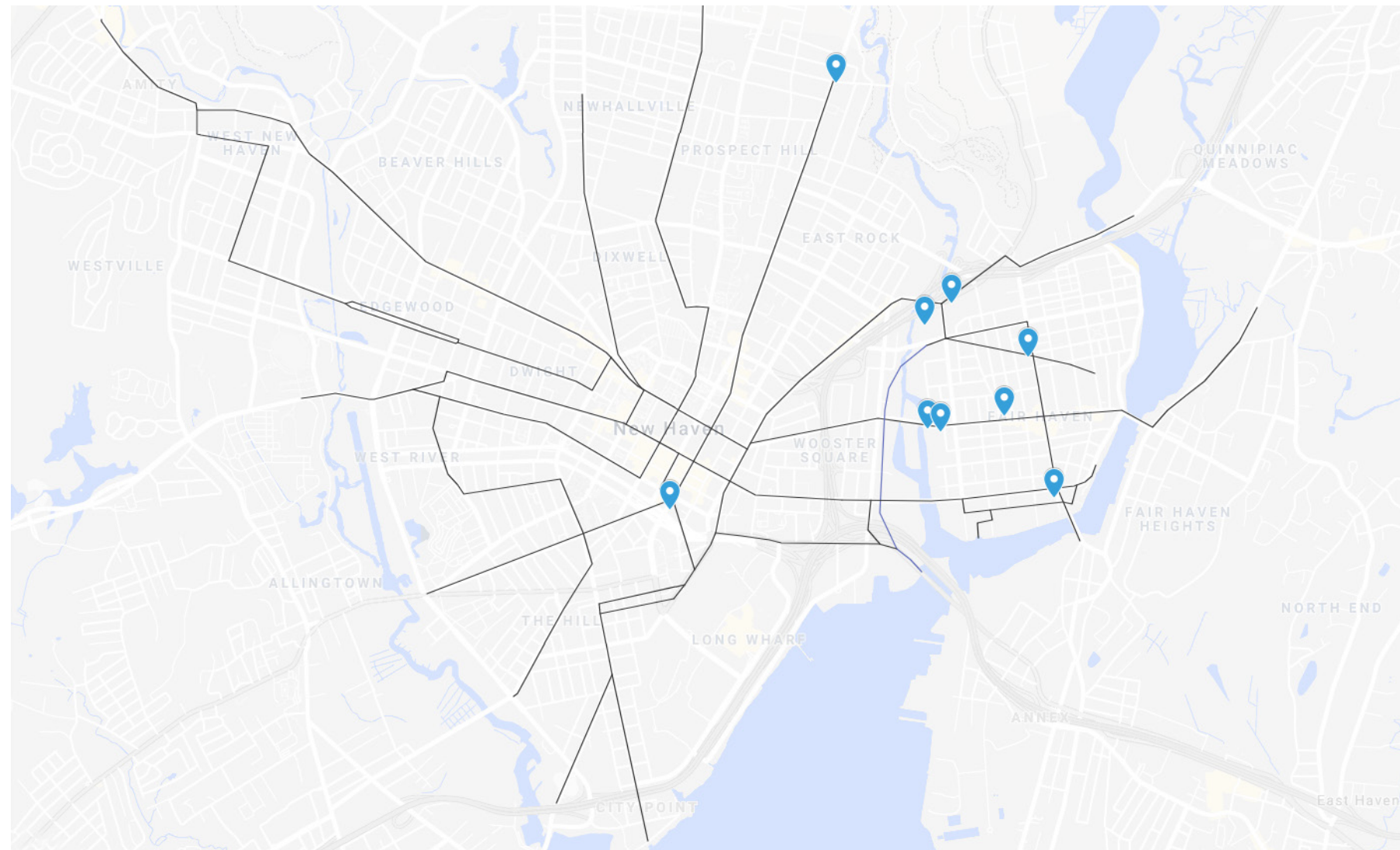
Streetcar Suburbs  
Hubinger Street Case Study



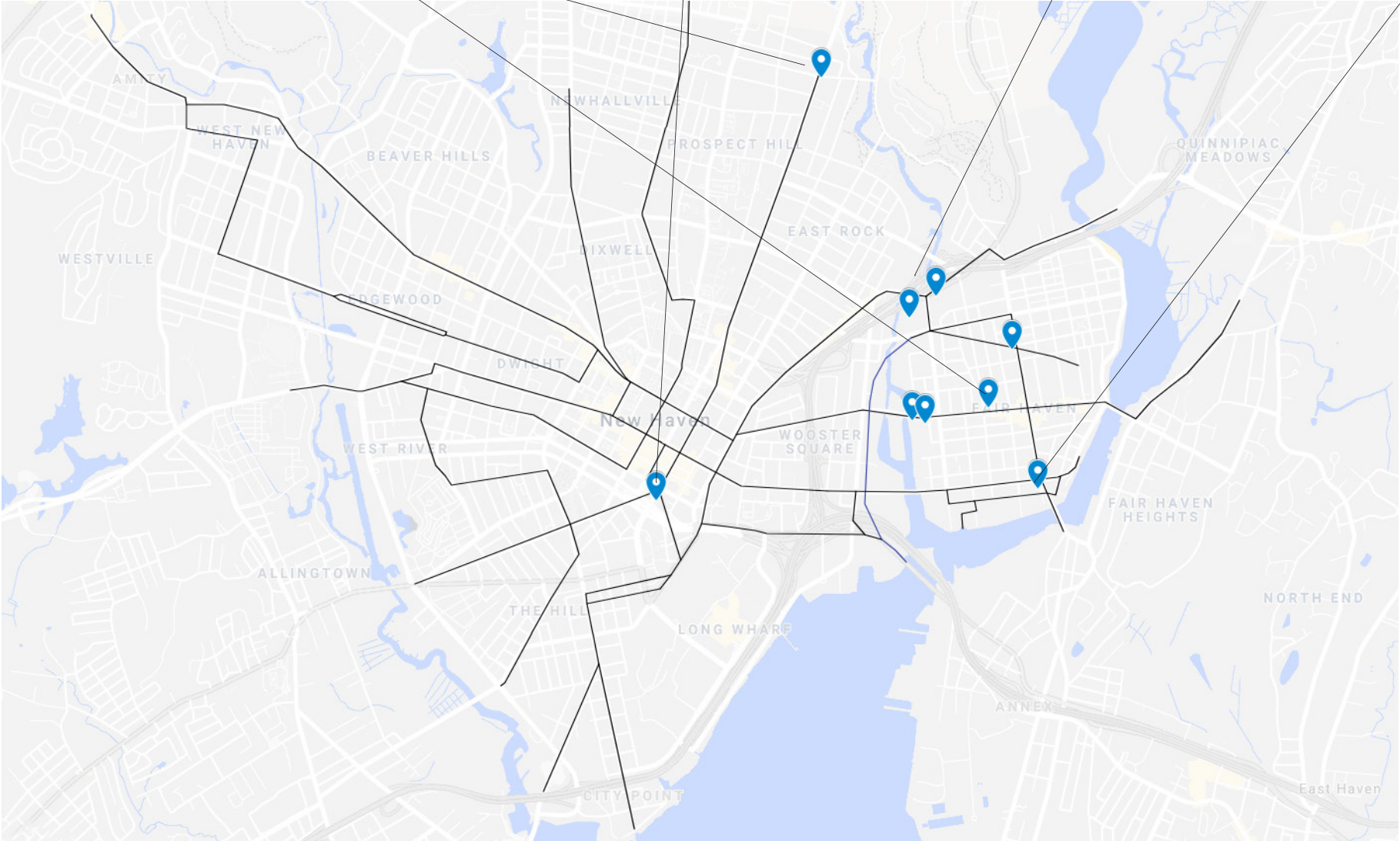


The  
New Haven  
Streetcar  
Heritage Trail

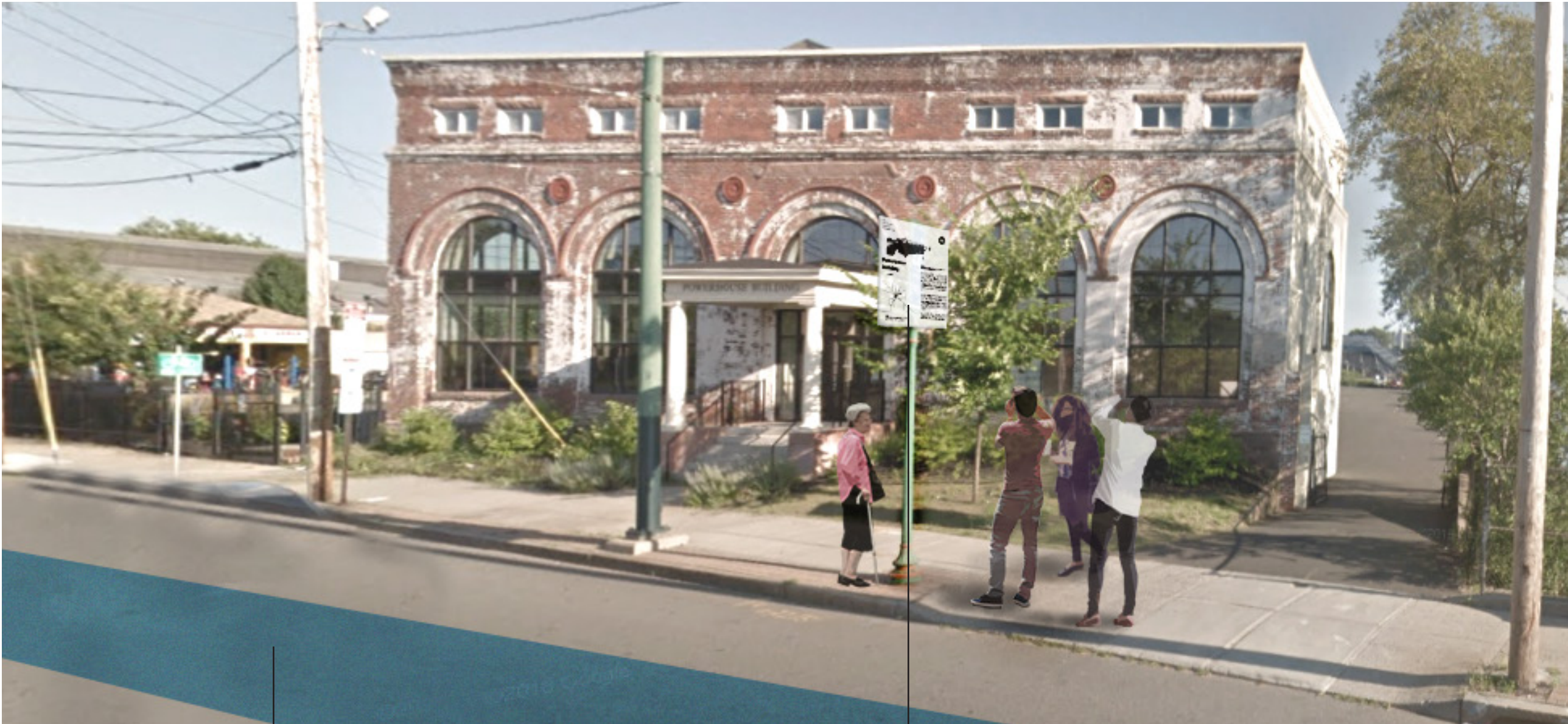
# Mapping the Ghosted Network of Streetcar Lines



# Building Trail: Former Connecticut Company Buildings



*Tour Rendering: Stop 1*

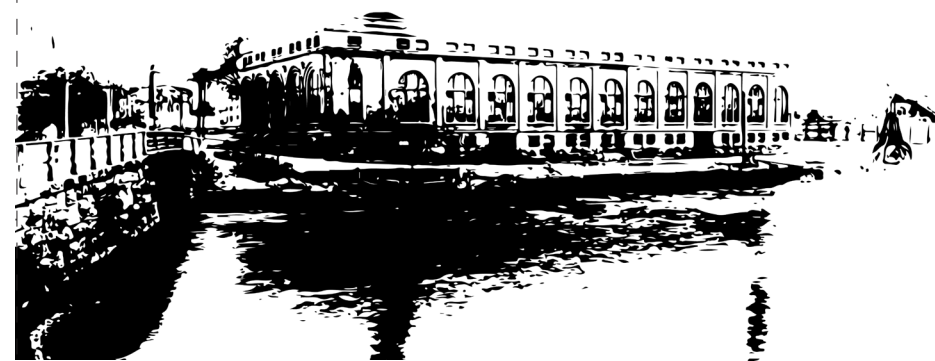


*Painted Street*

*Signage System*

# Signage Mockup

The  
New Haven  
Streetcar  
Heritage Trail



## Powerhouse Building

circa 1900



**01.** This is the first stop on the New Haven Streetcar Heritage Trail.

**F.** This building is located along the former Fair Haven Streetcar Line.

Built in the late 19th century, this remarkable two story brick building once housed ten upright boilers and three 500-volt generators that provided much of the electricity that powered New Haven's extensive streetcar system. It was known as "Station A." Two prominent chimney stacks rose high above the rest of the skyline, lending the building a prominence and recognizability from afar.

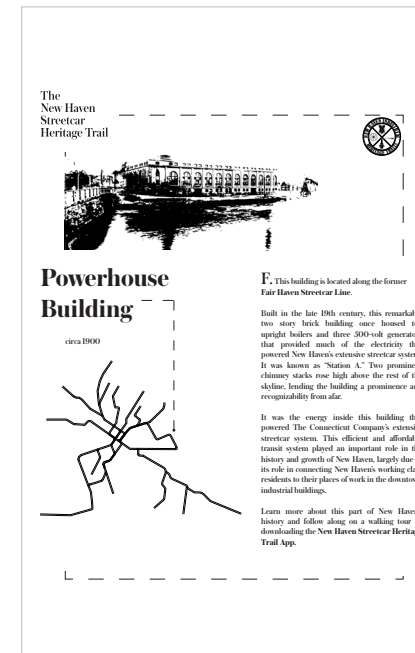
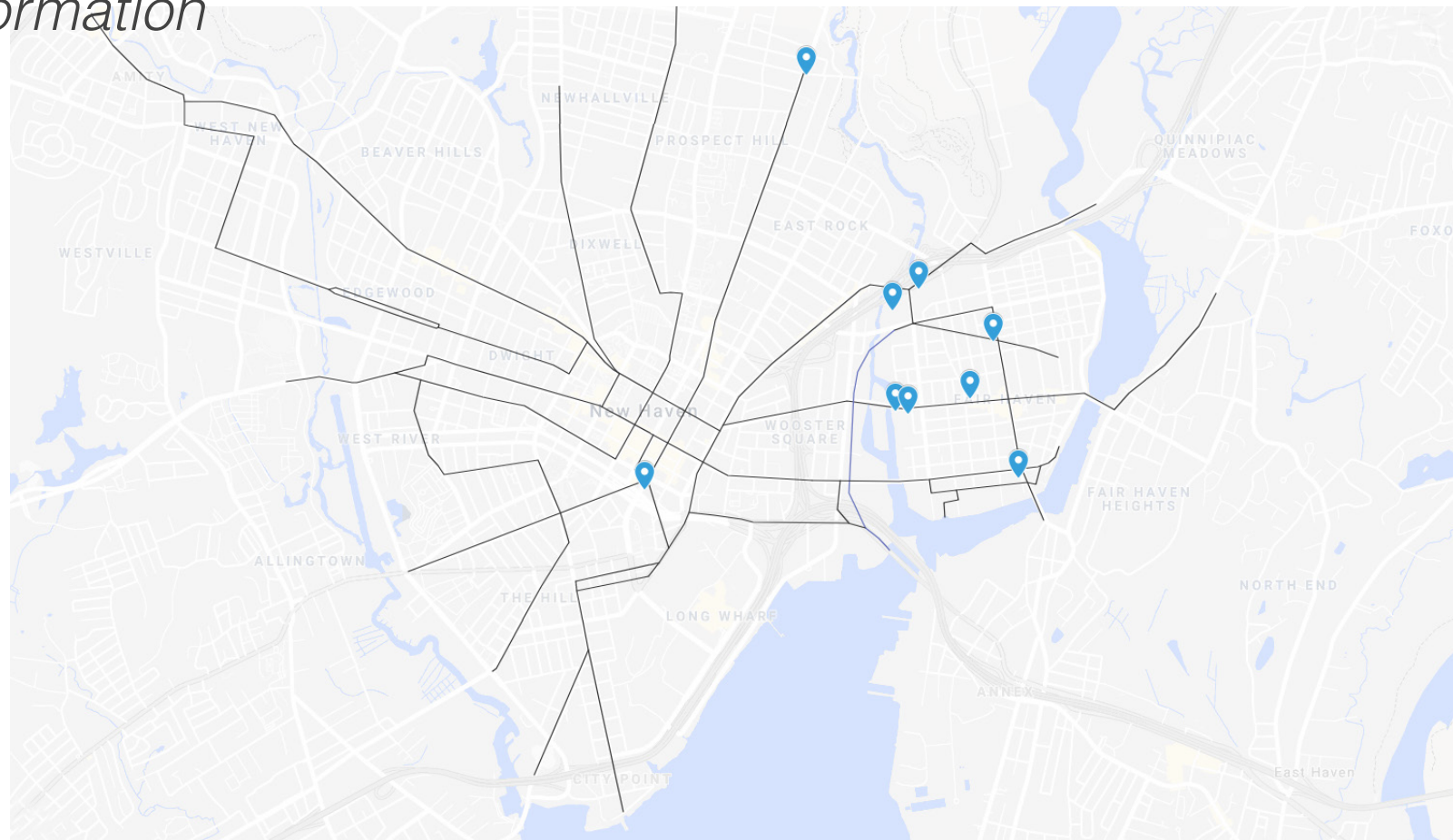
It was the energy inside this building that powered The Connecticut Company's extensive streetcar system. This efficient and affordable transit system played an important role in the history and growth of New Haven, largely due to its role in connecting New Haven's working class residents to their places of work in the downtown industrial buildings.

Learn more about this part of New Haven's history and follow along on a walking tour by downloading the **New Haven Streetcar Heritage Trail App**.

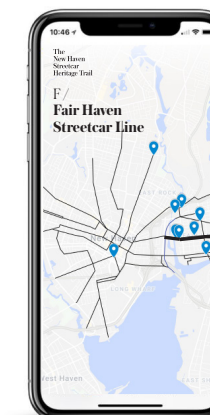
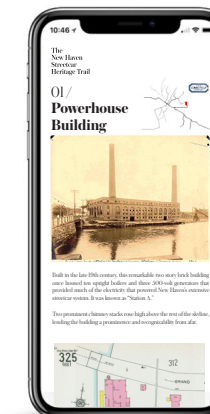
*Walking Tour: Streetcar Line Painting*



# Layers of Information



Signage System



Walking Tour App



Rendering: Powerhouse Building, shown with street paint and plaque